

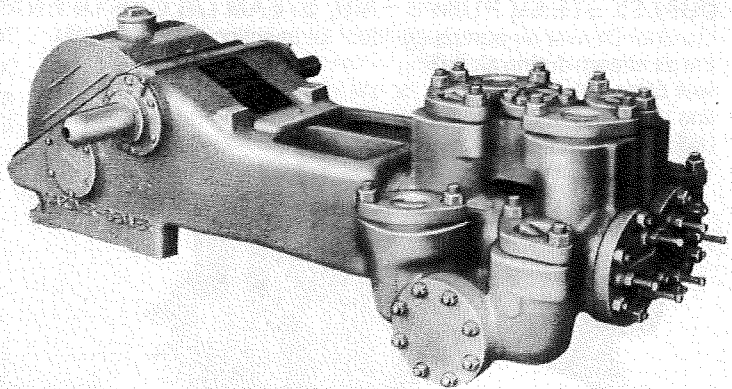
# GARDNER-DENVER®

PUMPS • RIG COMPONENTS • AJAX® PUMPS  
 — TUFF-BREED® PARTS • MAYHEW® RIGS —

## DUPLEX PRODUCTION PUMPS 16 to 149 HP

### FX DUPLEX PUMPS

Gardner-Denver FX duplex pumps are widely used for oil line, mining, industrial and general water service. Typical applications include oil line pumping, chemical and petroleum products transfer, mine dewatering and washdown service on oil field drilling rigs.



### SIZES AND RATINGS - FX DUPLEX PUMPS FOR OIL LINE, MINING AND INDUSTRIAL SERVICE

Model	Stroke	Line Size Diameter		Normal Operation					***Maximum Recommended					Maximum Working Pressure		Max. Piston Rod Load	Approx. Weight Less Skid
				Displacement		Max. Pump RPM	Jack-shaft RPM	Input HP at Max. Speed	Displacement		Max. Pump RPM	Jack-shaft RPM	Input HP at Max. Speed	psi	bars		
		in	mm	gpm	lpm				gpm	lpm							
FXF * B	5" (127 mm)	4 1/2	114.3	121	458	90	439	16.2	148.5	562	110	537	19.7	197	13.6	3140 lbs. (1424 kg)	1495 lbs. (678 kg)
FXF ___ A		4	101.6	94.4	357				115	435				250	17.2		
		3 1/2	88.9	72.3	274				88.3	334				326	22.5		
		3	76.2	52.4	198				64.0	242				444	30.6		
		2 1/2	63.5	35.6	135			43.4	164			639	44.1				
FXG ___ C	6" (152 mm)	5	127.0	150	568	75	354	32	200	757	100	472	42.5	310	21.4	6122 lbs. (2777 kg)	2300 lbs. (1043 kg)
		4 1/2	114.3	121	458				161	609				385	26.5		
		4	101.6	94.9	359				126	477				492	33.9		
		3 1/2	88.9	71.9	272				95.8	363				646	44.5		
		3	76.2	52	197			69.3	262			895	61.7				
FXX ___ F	8" (203 mm)	5 1/2	139.7	200	757	63	297	46	260	984	100	471	73	338	23.2	8036 lbs. (3645 kg)	4760 lbs. (2159 kg)
		5	127.0	164	621				260	984				409	28.2		
		4 1/2	114.3	131	496				208	787				505	34.8		
		4	101.6	102	386				162	613				640	44.1		
		3 1/2	88.9	76.2	288			121	458			836	57.6				
		3	76.2	53.9	204			85.6	324			1136	78.3				
**FXX ___ J Two-Piece Fluid End	8" (203 mm)	5	127.0	164	621	63	297	46	260	984	100	471	73	409	28.2	8036 lbs. (3645 kg)	4930 lbs. (2236 kg)
		4 1/2	114.3	131	496				208	787				505	34.8		
		4	101.6	102	386				162	613				640	44.1		
		3 1/2	88.9	76.2	288				121	458				836	57.6		
		3	76.2	53.9	204			85.6	324			1136	78.3				
FXX ___ N Two-Piece Fluid End	8" (203 mm)	7 1/2	190.5	378	1431	63	297	47.2	600	2271	100	471	75	182	12.6	8036 lbs. (3645 kg)	5800 lbs. (2631 kg)
		7 1/4	184.2	352	1332				559	2116				195	13.4		
		7	177.8	328	1241				521	1972				209	14.4		
		6 1/2	165.1	282	1067				447	1692				242	16.7		
		6	152.4	239	905				379	1435				284	19.6		
		5 1/2	139.7	200	757				317	1200				338	23.3		
		5	127.0	164	621			260	984			409	28.2				
FXD ___ F	10" (254 mm)	5 1/2	139.7	226	855	57	342	72.8	337	1276	85	510	109	475	32.8	11270 lbs. (5112 kg)	6025 lbs. (2733 kg)
		5	127.0	185	700				276	1045				574	39.6		
		4 1/2	114.3	148	560				221	836				709	48.9		
		4	101.6	115	435				172	651				897	61.8		
		3 1/2	88.9	86.2	326			129	488			1171	80.7				
		3	76.2	61	231			91	344			1500	103.4				
**FXD ___ J Two-Piece Fluid End	10" (254 mm)	5	127.0	185	700	57	342	72.8	276	1045	85	510	109	574	39.6	11270 lbs. (5112 kg)	6235 lbs. (2828 kg)
		4 1/2	114.3	148	560				221	836				709	48.9		
		4	101.6	115	435				172	651				897	61.8		
		3 1/2	88.9	86.2	326				129	488				1171	80.7		
		3	76.2	61	231			91	344			1500	103.4				
FXD ___ N Two-Piece Fluid End	10" (254 mm)	7 1/2	190.5	427	1616	57	342	74.7	637	2411	85	510	111	255	17.6	11270 lbs. (5112 kg)	7090 lbs. (3216 kg)
		7 1/4	184.2	398	1506				594	2248				273	18.8		
		7	177.8	371	1404				553	2093				292	20.1		
		6 1/2	165.1	319	1207				475	1798				339	23.4		
		6	152.4	270	1022				403	1525				398	27.4		
		5 1/2	139.7	226	855				337	1276				475	32.8		
		5	127.0	185	700			276	1045			574	39.6				
FXO ___ L Two-Piece Fluid End	10" (254 mm)	5	127.0	182	689	57	268	96	271	1026	85	400	144	772	53.2	15150 lbs. (6872 kg)	8300 lbs. (3765 kg)
		4 1/2	114.3	145	549				216	818				951	65.6		
		4	101.6	112	424				167	632				1206	83.1		
		3 1/2	88.9	83	314				124	469				1500	103.4		
FXO ___ M Two-Piece Fluid End	10" (254 mm)	7 1/2	184.2	396	1499	57	268	100	590	2233	85	400	149	367	25.3	15150 lbs. (6872 kg)	10500 lbs. (4763 kg)
		7	177.8	368	1393				549	2078				393	27.1		
		6 1/2	171.5	341	1291				509	1927				423	29.3		
		6	152.4	316	1196				471	1783				457	31.5		
		5 1/2	139.7	267	1011				398	1506				536	37.0		
		5	127.0	223	844				332	1257				638	44.0		
			182	688	271	1026	772	53.2									

\* Insert applicable letter code: "A" — Standard Fitted; "C" — Bronze Fitted; "E" — Oil Service Fitted. \*\* Cast steel fluid cylinders tested to 7000 pounds. \*\*\* These speeds are recommended for favorable suction conditions and consideration must be given to viscosity and character of fluids. Specifications subject to change without notice.

† Fluid cylinder liners and pistons are interchangeable in all sizes in the tables except for FXF cylinders fitted with 4 1/2" parts and FXX and FXD cylinders with 5 1/2" parts. Maximum working pressure shown applies to fluid ends. Power ends are designed for certain maximum plunger loads, and in service the power end determines the maximum pressure on a given size piston. Tabulated maximum pressure for any given size piston for maximum piston rod load must not be exceeded even at reduced RPM.